

## Chip scuttle

The Electrolux 900-Line of modular cooking equipment is designed to meet the heavy duty cooking requirements of institutional caterers and the larger restaurants and hotel kitchens. The flexibility of the modular design, with innumerable configurations either free-standing, bridged or cantilever, can be precisely tailored to meet the needs of the caterer. The model detailed on this sheet is an electric chip scuttle.



210406

### EASY TO INSTALL

- All models can be easily mounted on open base cupboards, bridging supports or cantilever system.
- Main connections can be via the rear or the base of the unit.
- All models provided with service duct to facilitate installation

### EASY TO CLEAN

- One-piece pressed worktop in stainless steel with Scotch Brite finish for easy cleaning.
- The special design of the control knob system guarantees against water infiltration.

### EASY TO USE

- Units are 93 cm deep to give an unusually large working surface area.
- Heating via infrared element positioned on the back of the unit.
- ON/OFF switch.
- Well suitable to contain a 1/1 GN container with a maximum height of 150 mm.
- Supplied as standard with a 1/1 GN perforate false bottom specially shaped to facilitate food collection through a spatula.

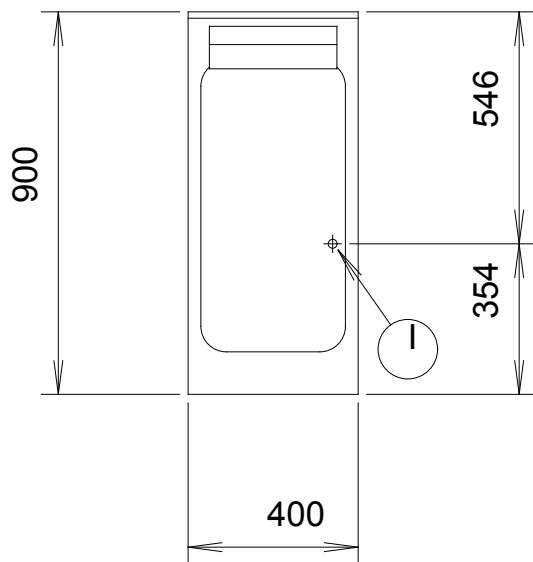
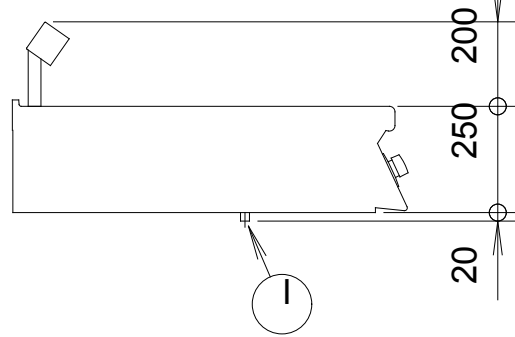
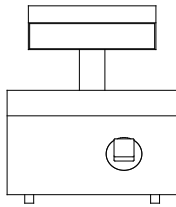
### EASY TO MAINTAIN

- Access to all components from the front.
- IPX5 water protection.

### EASY ON THE ENVIRONMENT

- 98% recyclable by weight.
- CFC free packaging.

210406



597815500

Elco 900

Chip scuttle

CAPA010

		ZCSTE1 210406
<b>LEGEND</b>		
I - Electrical connection		230 V, 1N, 50/60
<b>TECHNICAL DATA</b>		
Configuration		Free Standing
External dimensions - mm		
width		400
depth		930
height		250
Usable well dimensions - mm		
width		306
depth		510
height		156
Power - kW		
installed-electric		1
Net weight - kg.		28
Supply voltage		230 V, 1N, 50/60
<b>ACCESSORIES</b>		
2 SIDE COVERING PANELS FOR TOP-D=900MM		216278
CHIMNEY UPSTAND 400MM		206303
FRONTAL HANDRAIL 1200 MM		216049
FRONTAL HANDRAIL 1600 MM		216050
FRONTAL HANDRAIL 400 MM		216046
FRONTAL HANDRAIL 800 MM		216047
JUNCTION SEALING KIT		206086
LARGE HANDRAIL(PORTIONING SHELF)400 MM		216185
LARGE HANDRAIL(PORTIONING SHELF)800 MM		216186
PAIR OF COVERING STRIPS FOR END ELEMENTS		216234
SIDE HANDRAIL-RIGHT/LEFT HAND		216044

2009-06-19

Subject to change without notice